

DESSO

Grezzo

CARPET TILES



 **Tarkett**



THE BEAUTY OF **CIRCULARITY**

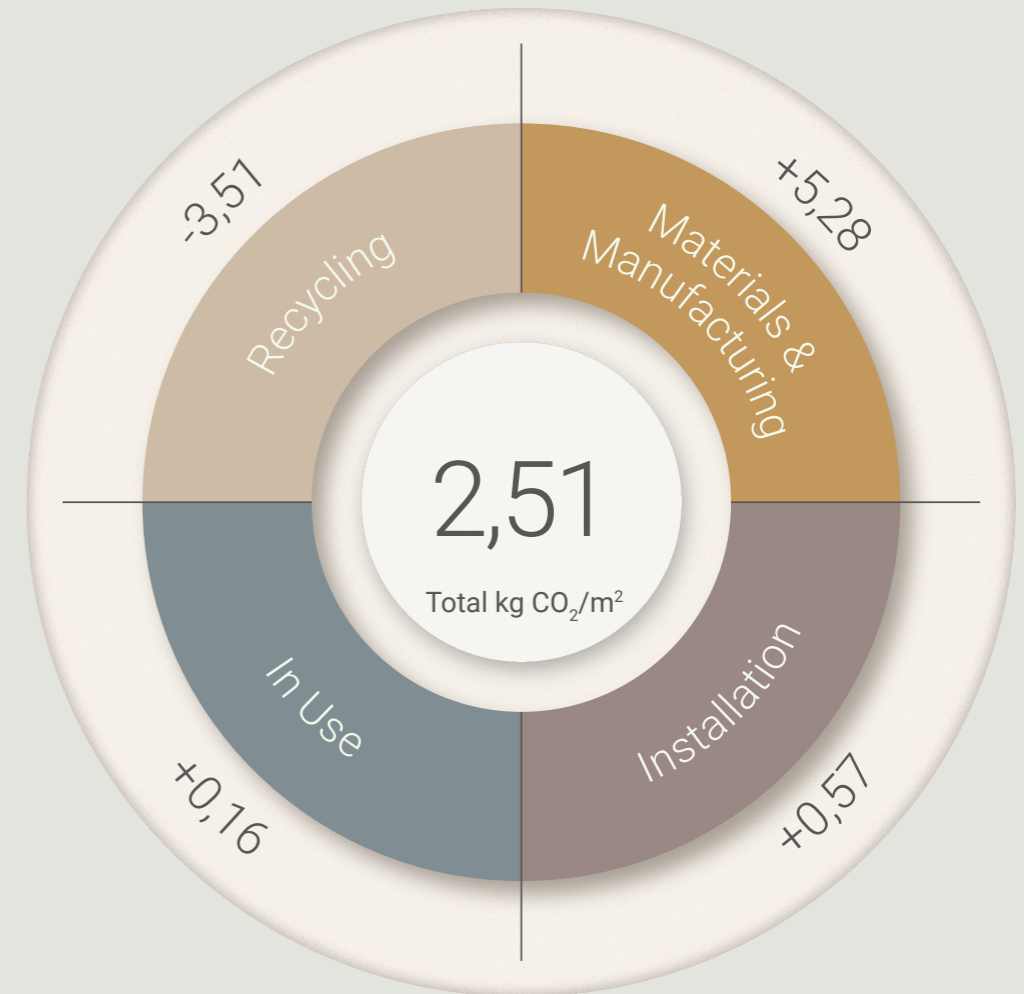
At Tarkett, our approach to circularity focuses on three key areas: design, materials and circular journey. For us, the beauty of circularity is about the beauty of the reused materials that go into our products, the innovative manufacturing processes we implement, and the knowledge that we're actively cutting down on waste and greenhouse gas emissions.

THE EVOLUTION OF ECOBASE®

Over a decade ago we made a commitment to place circularity at the core of our ambitions as a company. Our carpet tiles are composed of two key components – yarn and EcoBase backing – that come together just as neatly as they can later be taken apart. As part of our continuous efforts to reduce our carbon footprint we are proud to launch a new and improved EcoBase backing, which sees a new bio-based ingredient replace a core ingredient formerly composed of petroleum-based content.



OUR CIRCULAR CARBON FOOTPRINT



To keep track of the carbon generated and saved over a product's life cycle, we calculate and externally verify the Circular Carbon Footprint of every one of our carpet tile collections.

Together with our holistic design approach and carefully considered materials, our closed-loop system ensures that our carpet tiles record an impressively low circular carbon footprint – one we're continually working, alongside our partners and customers, to shrink even further.

Circular Carbon Footprint: according to the Environmental Product Declaration (EPD) S-P-08952 DESSO Grezzo, Grezzo Bloom, and Grezzo Vivid externally verified by Bureau Veritas, based on the total carbon footprint (Modules A-D) with a closed loop circular recycling scenario.

PURE UNTOUCHED BEAUTY

Celebrating the pure, untouched beauty of the world's natural rocky landscapes, this striking 100% recyclable yarn and backing support Tarkett's ongoing commitment to protect the planet's fragile natural resources.

Reminiscent of the Earth's petrous planes and flint-covered cliff faces, DESSO Grezzo comprises of 12 distinctive colourways. These range from cool concrete hues mimicking organic minerals, through to warmer earthy greens and clay-like terracotta browns.



GREZZO 2067



REFINED **FINISH**

The rugged, irregular weave forms an untamed, rock-ribbed texture, adding depth and natural movement to expansive spaces. Close up views reveal an intricately unique pattern with no two tiles the same, while from afar the tiles form a seamless appearance – perfect for creating a refined finish in a variety of workspaces.





GREZZO 8927



GREZZO 8927, 7923

MORE CREATIVE
FREEDOM



GREZZO 9027, 9930 GREZZO VIVID 7932, 2007 GREZZO BLOOM 7924, 2003

We have expanded the DESSO Grezzo family with a new collection: DESSO Grezzo Bloom & DESSO Grezzo Vivid. This collection presents an addition to the existing DESSO Grezzo collection to offer even more creative design freedom when designing your interior space.



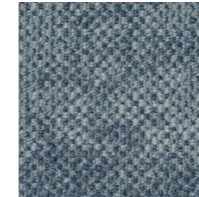
GREZZO 9930



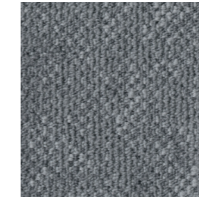
GREZZO 9930



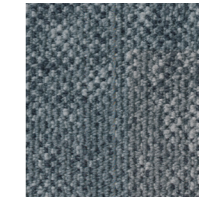
COLOUR RANGE



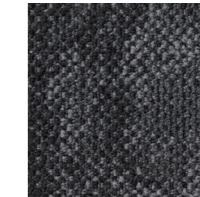
AB64 8904
711793005



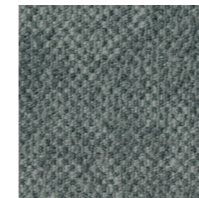
AB64 9035
711793011



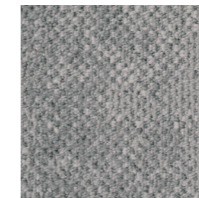
AB64 8913
711793006



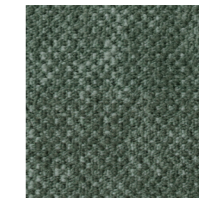
AB64 9033
711793010



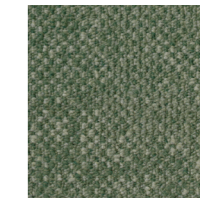
AB64 8927
711793007



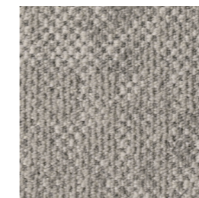
AB64 9027
711793009



AB64 7923
711793004



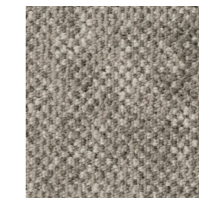
AB64 7844
711793003



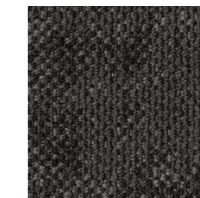
AB64 9930
711793013



AB64 2067
711793002

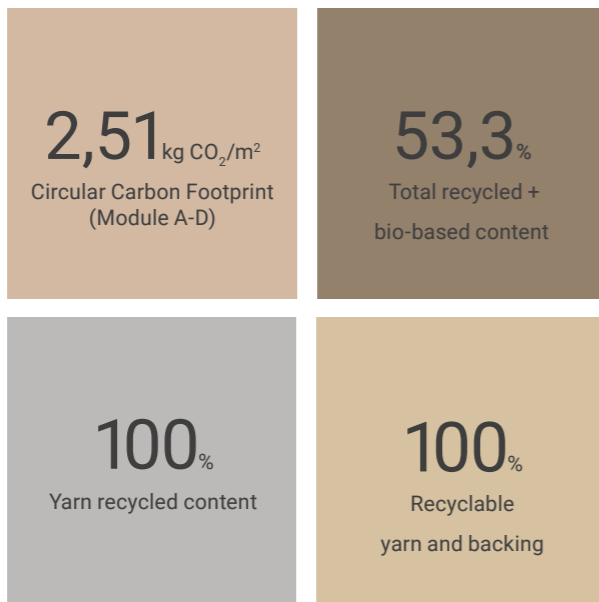


AB64 9106
711793012



AB64 9024
711793008

SUSTAINABILITY CREDENTIALS



Circular Carbon Footprint: according to the Environmental Product Declaration (EPD) S-P-08952 DESSO Grezzo, Grezzo Bloom, and Grezzo Vivid externally verified by Bureau Veritas, based on the total carbon footprint (Modules A-D) with a closed loop circular recycling scenario.





TECHNICAL SPECIFICATION

Preliminary specification according to EN 1307

Type of manufacture	ISO 2424	Tufted 1/10" Structured loop pile	
Pile Fibre	ISO 2424	Solution dyed BCF Polyamide 6	
Dimensions	EN ISO 24342	50 x 50 cm / 19.68" x 19.68" (20 tiles per box)	
Primary backing	ISO 2424	Polyester fleece	
Secondary backing	ISO 2424	DESSO EcoBase*	
Total thickness	ISO 1765	7.0 mm	0.3 inch
Effective pile thickness	ISO 1766	3.5 mm	0.14 inch
Total mass	ISO 8543	4100 g/m ²	121.0 oz/yd ²
Total pile mass	ISO 2424	650 g/m ²	19.2 oz/yd ²
Effective pile mass	ISO 8543	395 g/m ²	11.7 oz/yd ²
Pile density	ISO 8543	0.113 g/cm ³	0.0041 lb/in ³
Number of tuft	ISO 1763	1580 /dm ²	132104 /yd ²
Stroll test	ISO 6356	≤ 2.0 kV	
Classification for use	EN 1307	33 Commercial - heavy use	
Vertical resistance	ISO 10965	≤ 1 x 10 ⁹ Ohm	
Dimensional stability	EN 986	≤ 0.2 %	
Impact sound reduction ΔL _w	ISO 10140	25 dB	
Noise reduction	ISO 354	0.20 α _w	
Flammability	EN 13501-1	B _{fl} - s1 (loose laid tested)	


Preliminary specification

DESSO flooring products are to be installed in full accordance with Tarkett's installation instructions and recognized trade standards. An effective, regular cleaning and maintenance program is vital for retaining a high appearance level. DESSO flooring products should only be used as floorcoverings. Note: Tarkett reserves the right to change this specification without prior notice; changes are subject to normal production tolerances. For the latest versions of the technical specifications, visit www.tarkett.com



CE Manufactured by:
 Tarkett BV
 PO BOX 169
 NL - 5140AD Waalwijk

EN 14041
 0493-CPR-0002



* EcoBase - 100% recyclable, contains up to 91% recycled and bio-based content. Recycled content is externally verified by Lloyds Register.



